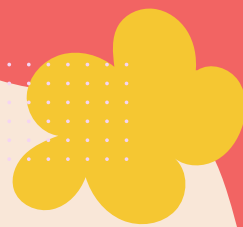


# Make and Mingle



**WEDNESDAY, MAY 1**

**6:30-7:30PM**



**For families with children ages 6-17 years.**

Join in the fun as we craft and build friendships in an inclusive family environment. This program is geared towards families with children 17 years and younger with sensory issues, those on the autism spectrum or those who have other specific needs.

**Registration begins Friday, April 5 at 9:30am.**

Approval for distribution of these materials is not an endorsement of such services, activities and/or products by the Smithtown School District.

The Library is glad to provide accommodations for patrons with special needs. Please call 2 weeks prior to a program to make arrangements.



Smithtown Building  
1 North Country Road  
Smithtown, NY 11787  
631-360-2480  
[www.smithlib.org](http://www.smithlib.org)