

WELCOME TO GREAT HOLLOW MIDDLE SCHOOL



OUR ADMINISTRATIVE TEAM



Jon Macaluso
ASSISTANT PRINCIPAL
Last Names from A-L



John Scmillio
PRINCIPAL



Peter Russo
ASSISTANT PRINCIPAL
Last Names from M-Z

INTRODUCING



Mike Olsen
Dean of Students

GHMS SCHOOL COUNSELORS

SCHOOL COUNSELORS

Mr. Riviello (6th: A-Fe)

Mrs. Stone (6th: Ff-L)

Mrs. Kerins (6th: Ma-Mu)

Mrs. LaPresti (6th: Mv-Z)

SOCIAL WORKER

Mrs. Cleveland

SCHOOL PSYCHOLOGISTS

Mrs. Cortese

Ms. Ahern

OFFICE ASSISTANT

Mrs. Colucci

OTHER PEOPLE YOU SHOULD KNOW

Director of English – Raina Ingoglia

Director of Mathematics – Angelica Babino

Director of Science – Stephanie O'Brien

Director of Social Studies – Chuck Benvenuto

Director of Fine Arts – Victoria Hartman

Director of World Languages – Vincenza Graham

Director of CTE – Christine LoFrese

Director of Guidance – Kevin Colon

OFFICE CLERICAL STAFF

Ms. Roberta Hanft – Principal's Secretary

Ms. Marianna Mendola – Assistant Principal Secretary

Ms. Lorraine Jaworski – Main Office Secretary

Ms. Donna Morello – Assistant Principal Secretary

Ms. Lisa Colucci – Guidance Counselor Secretary



FIRST TIME MIDDLE SCHOOL PARENTS??



RIGHT NOW YOU
MIGHT BE FEELING
LIKE....



Gotta stay calm!



First Time Parent



1 Month Later



4 Years And 2 More Kids Later, You're Like...



BY THE END OF THE
PRESENTATION,
YOU'LL BE FEELING
LIKE...







**RELAX
YOU'RE
IN
GOOD
HANDS**

KeepCalmAndPosters.com



ABOUT TONIGHT'S AGENDA

Personalized
School Tour



GHMS Parent
Presentation

TONIGHT WE WILL REVIEW:

- + Overview of GHMS
- + Course offerings, clubs, activities
- + Typical student schedule
- + Typical student day in middle school
- + Q & A session



THE MIDDLE SCHOOL EXPERIENCE

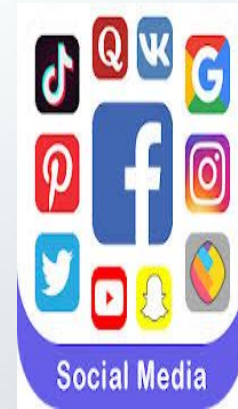
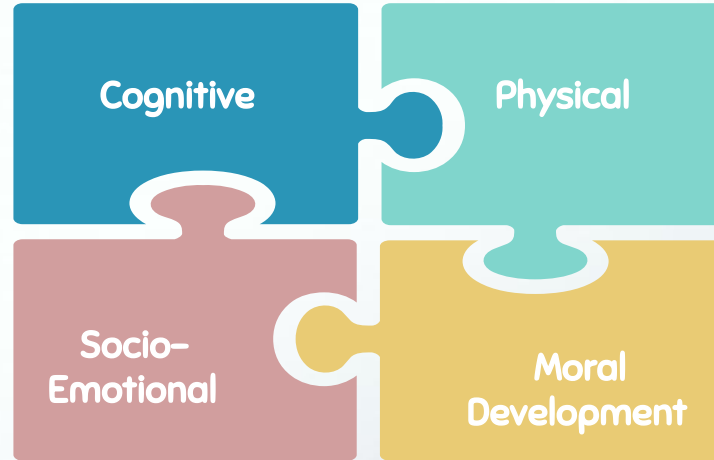
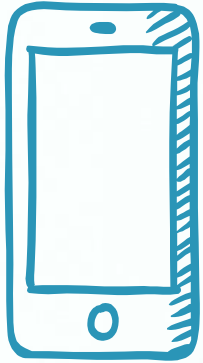


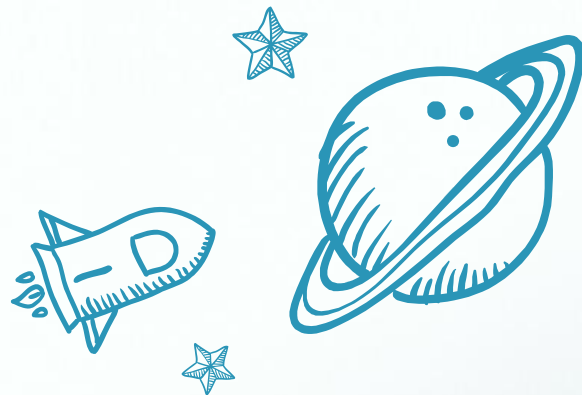
TOTO, I'VE A FEELING

WE'RE NOT IN KANSAS ANY MORE



MIDDLE SCHOOL DEVELOPMENT





NEW EXPERIENCES AT GHMS

Here are a few things different from elementary school



WHAT'S NEW!

- Much bigger school
- Kids rotate between classes
- Kids have multiple teachers
- Use of lockers
- Quarter classes
- Life in the cafeteria
- Gym
- Music
- Buses
- Access to a designated guidance counselor
- Much more freedom!

BELL SCHEDULE

School starts at
7:50am

School ends at
2:33pm



Sample 6th Grade Schedule



PERIOD 1	ELA
PERIOD 2	ELA
PERIOD 3	Music
PERIOD 4	Lunch
PERIOD 5	Social Studies
PERIOD 6	Math
PERIOD 7	Math Lab/Phys Ed
PERIOD 8	Science
PERIOD 9	Tech Ed/Tech Lit/Art/FACS



6TH GRADE TEACHER TEAMS





Team 6A

Mr. Andolina Mrs. Campbell
Mr. Sillam Mrs. Portsmore
Mrs. Haynes Mrs. Skartsiaris
Mrs. Piazza

6th G R A D E



Team 6B

Mrs. LaRussa Mrs. Rooney
Mr. Thornton Mrs. Baumeister
Mrs. Damato Mrs. Skartsiaris

T E A M



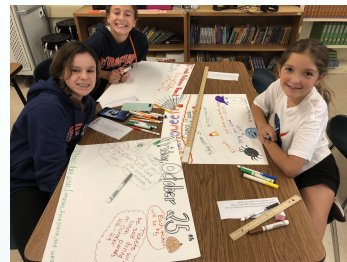
Team 6D

Mr. Klee
Mrs. Nelson
Mr. Hart
Mrs. Skartsiaris

CLUB OFFERINGS AT GREAT HOLLOW MIDDLE SCHOOL

- Accounting/Stock Market Game Club
- Artistic Craft Club
- Chef's Club
- Digital Media Club
- Engineers Competition Club
- FCCLA Club
- First Lego League Robotics Club
- First Responders Club
- Friendship Club
- GSA
- Intramurals
- Literary Art/Library Club
- Mock Trial Club
- MoMathlon Club
- Music Theater Club
- National Junior Honor Society
- Science Olympiads
- Select Chorus

** Please keep in mind that Club Offerings are subject to change! *



CHARACTER DEVELOPMENT

Guest Speakers (Ryan's story, Rohan Murphy)

School Theme Days (P.S. I Love You Day, College Day, Red Ribbon Week, Coaches vs. Cancer, Spirit Week)

Anti Bullying Efforts (Athletes Helping Athletes, LICAB)

School Assemblies (Voices of the Holocaust, SCPD)

Project Wisdom (Daily announcements)

Student Recognition Awards (*NJHS, STAR Student, MVTP, Scholar Athlete Breakfast, Caught Being Kind, Academic Awards Night*)

Great Hollow PTA

The Great Hollow PTA is here to serve the needs of our students, staff, and families throughout the year.

The PTA supports students and their families by providing year long programs and events for every child in every grade level. Please consider volunteering to support our children.

This upcoming year, we will need your help to sustain a successful school year. Your involvement will continue to help our programs thrive.

Membership | \$10.00 per person

Be a voice! Have a vote! Continue to help our children!

Great Hollow Middle School PTA website

<https://greathollowpta.givebacks.com/>

Communicate with
teachers

Be Involved

Attends school
functions

Teach respect

Check Google
Classroom

Limit social
media

Foster
independence

Teach time
management

Set limits

Proper sleep & eating

Don't over schedule

Encourage
Monitor

Listen

Review
homework

Be a role model

WHAT CAN YOU DO AS PARENTS?



6TH GRADE SUMMER ORIENTATION

MONDAY, AUGUST 25TH 10 – 11:30 AM ORIENTATION
TUESDAY, AUGUST 26TH 8:30 AM – 12:00 PM OPEN HOUSE

