

## Calendar Changes and/or Additions

- Sept. 14, 2011 - **GHMS** Principals' Coffee Hour changed Oct. 20th to October 19 - **AE** Spring Pictures April 4 - **HSW** Concert on June 5th - **District Clerk** name added.  
- **AE Assistant Principal** name added.
- Sept. 16, 2011 - **HSW** underclass pictures changed from Sept. 22-23 to October 3-4 - **HSE** Spooky Hallways date changed to Oct. 28th - Dec.15th Concert removed.
- Sept. 26, 2011 - **TE** PTA president's phone number changed- **HSE** Senior Banquet date changed from 1/27 to 1/26/2012. - **DE** Gr. 5 Sports Night chg. From 10/7 to 10/14-  
PTA Mtg. changed from 4/17 to 4/3- PTA mtg. changed 10/4 to 7pm- Pumpkin Patch date chg. From 10/28 to 10/31 - **SE** School Picture dates changed to  
10/5 Gr. K-2 and 10/6 Gr. 3-5.
- Oct. 3, 2011 - **DISTRICT CALENDAR CHANGE** - Jan. 2, 2012 School Closed - May 25, 2012 School Open - AMS 12/5 Concert changed to 1/18/2012.  
**2011-2012 STATE TESTING SCHEDULE UPDATED.**
- Oct. 7, 2011 - **DE** PTA Blood Drive date changed from 10/18 to 10/25. **NMS** 8th grade dance changed from 6/1 to 6/8.
- Nov. 1, 2011 - **BB** PTA President's e-mail address changed. **AMS** Winter Concert date changed from Dec.7th to Dec. 6th.
- Nov. 3, 2011 - **CENTRAL REGISTRATION** - telephone number changed to 382-2024.
- Dec. 14, 2011- Superintendent's Conference Days - **May 24 & May 25 No School.** **AMS** date change NJHS Induction moved from 4/18 to 4/25. **SE** Field Day date  
changed from 5/24 to 6/1. New Board of Education Member appointed.
- Dec. 20, 2011- **2011-2012 State Testing Schedule** - date change for English Language Arts and Mathematics Assessment. **TE** Chorus Concert March 27th at 7:00 pm.  
**MTP** Blood Drive - Jan. 27 and Kindergarten Orientation date change from April 19 to May 1.
- Dec. 22, 2011 - **GHMS** Spring Book Fair changed from April 30 to May 14th. Read Aloud date moved from April 19 to May 4th. **MTP** Blood Drive Jan. 17 -  
K Orientation May 1 - Field Day Rain Date June 7.
- Jan. 5, 2012 - **NE** Kindergarten Orientation Program April 25. **GHMS** Spring Book Fair change from April 30th to May 14th - end date May 21. Read Aloud change  
from April 19 to May 4th. **MTP** Blood Drive Jan 17 -Field Day Rain Date changed from June 4 to June 7 - K Orientation changed from May 17 to May 1.
- Jan. 26, 2012 - **GHMS** - New Principal appointed - May 14 Concert added. **AMS** - Interim AP Principal - Students of Distinction Breakfast changed from 2/9 to 2/15.
- Jan. 31, 2012 - **HSW** Junior Prom May 23. Business Awards date changed from May 23 to May 21.
- Feb. 10, 2012 - **DE** Gr. 1-5 Field Day from 5/24 to 5/23 - Gr. K Field Day from 5/23 to 5/21 - Gr. 1-5 Field Day Rain Date from 6/1 to 5/30 - Gr. K Field Day Rain Date  
from 5/31 to 5/29.
- March 5, 2012- **DE** Blood Drive date changed from 3/13 to 3/20 - Pre-K Program dates changed from 4/20 and 4/27 to 3/23, 3/30 and 4/16.
- March 6, 2012 - World Cultures Night date changed from 3/14 to 4/2.
- March 23, 2012- **HSW** Jazz Festival 4/25 - Tournament of Plays date changed from 4/27 to 5/4.
- April 4, 2012 - **GHMS** Grade 5 Student Visit changed from May 29th to May 22nd.
- May 4, 2012 - **GHMS** Moving Up Ceremony June 21 - time change from 10:00 am to 9:30 am.
- May 18, 2012 - **SHS East and SHS West** - June 8 Last day of classes

A Message from Superintendent of Schools  
Edward Ehmann

Dear Community Member:

Welcome to the 2011-2012 school year. This District calendar is created to provide you with information that will enable you to stay connected to our schools.

Our schools are filled with a number of events and activities that are both entertaining and make us all feel better about the future. I have often encouraged parents of young children to attend high school plays, musicals, concerts and sporting events as one never knows what will inspire a youngster.

We also invite all of our residents who no longer have students in the system to attend school events as they too will find that our talented artists, actors and athletes can provide much entertainment.

We hope that you decide to visit our schools at some time during the year. We wish you the best of luck in the 2011-2012 school year.

Sincerely,

*Edward L. Ehmann*

Superintendent of Schools

### School and District News

School news is published in the *District Digest* and is also distributed as widely as possible through local papers and our building PTA units. The *Digest* is mailed to all district residents.

In addition, for more information, visit the District website at [www.smithtown.k12.ny.us](http://www.smithtown.k12.ny.us).

### Board of Education

**President - Gladys M. Waldron**  
34th year - term expires 2014

**Vice President - Theresa Knox**  
5th year - term expires 2013

**Joseph T. Saggese**  
7th year - term expires 2012

**Louis Liguori**  
5th year - term expires 2013

**Joanne McEnroy**  
1st year - term expires 2014

**Grace Plourde**  
1st year - term expires 2014

**Christopher Alcure**

**District Clerk**  
**Maureen O'Connor**  
382-2012

# Smithtown Central School District

## Administration

<b>General Information</b>	<b>382-2000</b>
<b>Superintendent of Schools</b> <b>Edward L. Ehmann</b>	<b>382-2005</b>
<b>Assistant Superintendent for Instruction &amp; Administration</b> <b>Maria L. Rianna</b>	<b>382-2030</b>
<b>Assistant Superintendent for Finance &amp; Operations</b> <b>Joan A. Niles</b>	<b>382-2115</b>
<b>Assistant Superintendent for Personnel Services</b> <b>Karen Ricigliano</b>	<b>382-2160</b>
<b>Director of Curriculum K-12</b> <b>Jennifer Bradshaw</b>	<b>382-2035</b>
<b>Administrator for Special Education &amp; Special Services</b> <b>Brenda A. Clark, Ph.D.</b>	<b>382-2070</b>
<b>Coordinator of Physical Education, Health &amp; Athletics</b> <b>Patrick Smith</b>	<b>382-2100</b>
<b>Plant Facilities Administrator</b> <b>Robert C. Woolsey</b>	<b>382-4130</b>
<b>Transportation Coordinator</b> <b>Mary Augugliaro</b>	<b>382-4100</b>

## 2011–2012 School Calendar

A list of the days schools will be closed is noted below.

### SEPTEMBER

- 5 Labor Day
- 6 Supt. Conf. Day (Staff Only)
- 7 SCHOOL OPENS
- 29 - 30 Rosh Hashanah

### OCTOBER

- 10 Columbus Day

### NOVEMBER

- 8 Supt. Conf. Day (Staff Only)
- 11 Veterans' Day
- 24 - 25 Thanksgiving Recess

### DECEMBER

- 26 - 30 Winter Recess

### JANUARY

- 16 Martin Luther King Day

### FEBRUARY

- 20 President's Day
- 20–24 Mid-Winter Recess

### APRIL

- 6-13 Spring Recess

### MAY

- 24-25 Supt. Conf. Days (2 days) (Staff Only)
- 28 Memorial Day Recess

### JUNE

- 21 Last Day of School for Students
- 22 Supt. Conf. Day

## School Time Schedules 2011-2012 School Year

School time schedules for the 2011 - 2012 school year are printed below. Transportation has been arranged to meet these scheduled times. Regularly scheduled 3:10 p.m. Wilson Tech. bus will begin to operate on the first day of school.

Schools	Buses Arrive	<u>A.M.</u>		<u>P.M.</u>		Wilson Tech. Shuttle Bus Depart	Late Buses Depart
		School Day	School Day	Buses Arrive	Buses Depart		
High School East	7:10-7:15	7:20	1:55	1:50	2:05	3:10	4:00/5:00
High School West	7:10-7:15	7:20	1:55	1:50	2:05	3:10	4:00/5:00
Accompsett MS	7:30-7:40	7:50	2:31	2:30	2:40		4:10/5:10
Great Hollow MS	7:30-7:40	7:50	2:31	2:30	2:40		4:10/5:10
Nesaquake MS	7:30-7:40	7:50	2:31	2:30	2:40		4:10/5:10
<b><u>EARLY ELEM.</u></b>							
Branch Brook	8:50-9:00	9:05	3:10	3:10	3:18		
Mt. Pleasant	8:50-9:00	9:05	3:10	3:10	3:18		
St. James	8:50-9:00	9:05	3:10	3:10	3:18		
Smithtown	8:50-9:00	9:05	3:10	3:10	3:18		
<b><u>LATE ELEM.</u></b>							
Accompsett	9:20-9:30	9:35	3:40	3:40	3:48		
Dogwood	9:20-9:30	9:35	3:40	3:40	3:48		
Mills Pond	9:20-9:30	9:35	3:40	3:40	3:48		
Nesconset	9:20-9:30	9:35	3:40	3:40	3:48		
Tackan	9:20-9:30	9:35	3:40	3:40	3:48		

**Note:** Schedule is based on good weather conditions.

**School Calendar  
Abbreviation Key:**

**Building Names**

AE	Accompsett Elementary
AMS	Accompsett Middle School
BB	Branch Brook Elementary
DE	Dogwood Elementary
GH	Great Hollow Middle School
HSE	Smithtown High School East
HSW	Smithtown High School West
MPE	Mills Pond Elementary
MTP	Mt. Pleasant Elementary
NE	Nesconset Elementary
NMS	Nesaquake Middle School
NYA	Joseph M. Barton Building New York Avenue
SE	Smithtown Elementary
SJE	St. James Elementary
TE	Tackan Elementary

**Other**

ACE	Adult Continuing Education
ACT	American College Test
Comm.	Committee
DEAR	Drop Everything and Read
Exec.	Executive Board
Gen.	General Meeting
Gr.	Grade
K	Kindergarten
NHS	National Honor Society
PTA	Parent/Teacher Association
PTSA	Parent/Teacher/Student Association
SAT	Scholastic Aptitude Test
SEP	School-wide Enrichment Program
SEPTA	Special Education Parent/ Teacher Association

**DAYS OF RELIGIOUS OBSERVANCE**

Following are some of the major religious observance days that occur during the school year on a day when school is in session. Pupils may be excused upon prior written request of the parent/guardian. These days are not legal holidays. The attendance register will be maintained as on other days.

<u>2011 - 2012 Dates</u>	<u>Days of Religious Observance</u>
August 1- August 31	Ramadan month long observance
October 13-14	Sukkot (begins sunset 10/12)
October 20	Shemini Atzeret-close of Sukkot - (begins sunset 10/19)
October 21	Simchat Torah—close of Sukkot (begins sunset 10/20)
November 1	All Saints Day
November 6	Id al-Adha
December 8	Immaculate Conception
December 21-28	Hanukkah (begins sunset 12/20)
January 7	Orthodox Christmas Day
February 22	Ash Wednesday
February 27	Orthodox Lent Begins
April 13-14	Concluding day of Passover (begins sunset 4/12)
May 17	Ascension Day
May 27-28	Shavuot (begins sunset 5/26)



**EMERGENCY SCHOOL  
CLOSING PROCEDURES**

In preparation for the upcoming winter season, parents and students should familiarize themselves with emergency school procedures. A Connect Ed call will be made to announce a school closing. In addition, the following radio and television stations have agreed to broadcast news about emergency school closings:

WALK - 97.5 FM/1370 AM  
B-103 - 103.1 FM  
WBLI/WBAB - 106.1/102.3 FM  
News 12 - Channel 12

If there is any doubt about school being open or closed, listen to these radio stations, watch Channel 12, or visit our website at [www.smithtown.k12.ny.us](http://www.smithtown.k12.ny.us). Residents are requested not to telephone the school office when weather is bad. Too many calls tie up vital phone lines, making it much more difficult to keep everything running smoothly.

Smithtown also has “delayed opening” and “early dismissal” procedures.

When it appears that the weather will improve early enough, the school district will institute its “delayed opening” procedure. A Connect Ed will be made, the radio stations will be notified, and bus and opening time schedules will be delayed from one to two hours, depending upon the individual situation. Dismissal will remain the same when possible.

If inclement weather makes it necessary to dismiss youngsters early, the radio and television stations will be notified, and a Connect Ed phone call will be made.

This information will also appear on our district website.

## 2011-2012 State Testing Schedule

### Reporting to Parents

#### Elementary Level

To provide parents with a comprehensive appraisal of their child's progress in all areas, Smithtown uses both written reports and parent-teacher conferences which will be held **December 2, 5, 6, 2011 and March 16, 2012**. Additional conferences may be scheduled as needed at the request of either teacher or parent. Written reports will be provided three times per year.

#### Secondary Level

Parents should look for their children's report cards within approximately two weeks of the end of each marking period indicated below. Secondary report card grades will also be available on the Parent Portal within one week of the end of each marking period.

If you have a question concerning your child's progress, contact the teacher or guidance counselor.

### Marking Periods

#### Quarter

##### Middle School and High School

- 1 September 7 - November 10, 2011
- 2 November 14, 2011 - January 27, 2012
- 3 January 30 - April 20, 2012
- 4 April 23 - June 21, 2012

**Note:** Last marking period dates are dependent upon exam schedules and may be changed.

Date	Grade	Test
October 15, 2011	10/11	PSAT- High School East & West
November 5, 2011	11/12	SAT - High School West
March 10, 2012	11/12	SAT - High School West
April 18 - May 18, 2012	K-12	NYSESLAT (Speaking)
April 17 - April 19, 2012	3	English Language Arts
April 17 - April 19, 2012	4	English Language Arts
April 17 - April 19, 2012	5	English Language Arts
April 17 - April 19, 2012	6	English Language Arts
April 17 - April 19, 2012	7	English Language Arts
April 17 - April 19, 2012	8	English Language Arts
May 5, 2012	11/12	SAT - High School West
April 25 - April 27, 2012	3	Mathematics Assessment
April 25 - April 27, 2012	4	Mathematics Assessment
April 25 - April 27, 2012	5	Mathematics Assessment
April 25 - April 27, 2012	6	Mathematics Assessment
April 25 - April 27, 2012	7	Mathematics Assessment
April 25 - April 27, 2012	8	Mathematics Assessment
May 7 - 18, 2012	K-12	New York State English As a Second Language Achievement Test -NYSESLAT (Listening, Reading, Writing)
May 23 - June 1, 2012	4 & 8	Grades 4 & 8 Science Performance Assessment
June 4, 2012	4 & 8	Grades 4 & 8 Science Written Assessment

**Regents Exams - January 24 -27, 2012  
June 13-22, 2012**

## AIMS & OBJECTIVES

The Smithtown School District is dedicated to educating students to develop desired moral, ethical, and cultural values, to stimulate and expand a continual learning process and to cultivate an understanding and appreciation of the rights and responsibilities of American citizens, which will enable them to function effectively as independent individuals in a democratic society.

The educational program strives to provide each child with the fundamental academic skills and basic knowledge required for his/her maximum educational development, the opportunity for each child to develop his/her interests and abilities to the fullest extent according to his/her individual potential, and special services to promote the physical, mental and emotional development of each child. It is the District's goal to foster in students good work habits, integrity, self-discipline, good sportsmanship, self-confidence, and a sense of purpose.

## PESTICIDE NOTIFICATION

New York State Education Law, Section 409-H, requires schools to provide written notification regarding actual or potential use of pesticides throughout the school year. The District is also required to maintain a list of students, parents or staff members who wish to receive a 48-hour prior written notification of specific pesticide applications in the District. This is to advise there have been no additional applications since the last notification.

The Smithtown School District, since 1992, has utilized an integrated pest management program (IPM) in order to restrict or eliminate entirely the use of pesticides in or around District facilities. The School District's IPM program includes the use of a contracted firm, expert in conducting integrated pest management programs. This firm conducts monthly inspections of all District facilities and takes appropriate remedial measures to eliminate or reduce the presence of insects or other pests.

While the District does not anticipate any situation where there will be a need to provide notification of a pesticide application 48 hours in advance, if you would like to receive such notification if one were required, please send a postcard or brief letter to Mr. Robert C. Woolsey, Smithtown Central School District, 26 New York Avenue Unit 1, Smithtown, New York 11787, requesting pesticide application notification. Please include the school building for which you would like to be notified and your name and address. In the unlikely event an application of a regulated pesticide application is required, the District would not apply such chemicals unless the school was to remain unoccupied for a continuous 72 hours following the application. In doing so, a 48-hour notification would not be required.

## TITLE IX OF THE EDUCATION AMENDMENT OF 1972

The Smithtown Central School District does not discriminate on the basis of race, color, or national origin in the employment and educational opportunities it offers, including vocational educational opportunities.

Also, as required by Title IX of the Educational Amendments of 1972, the Smithtown Central School District, Smithtown, New York does not discriminate on the basis of sex in the educational programs or activities which it provides (including vocational programs), appointment of employees, employment pay and benefits, counseling services for students, access by students to educational programs, course offerings, textbooks and student activities.

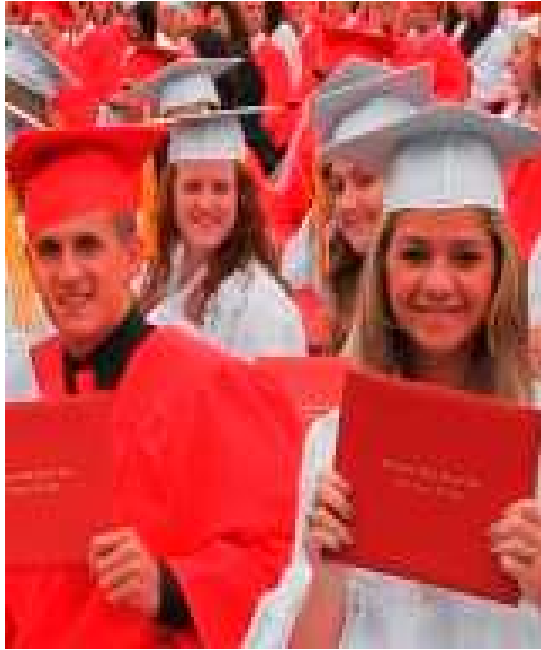
Mr. Vincent Fantauzzi, Title IX Coordinator, will provide information, including information on complaint procedures, to any student or employee who feels that her or his rights under Title IX may have been violated by the District or its officials. His office is in the Joseph M. Barton Building, 26 New York Avenue, Smithtown, New York. In addition, any student or employee may make an inquiry or a complaint directly to the Federal Office for Civil Rights.

## TITLE 45

Unless objection to any of the specific items of information following is submitted in writing by parent or legal guardians or by those students themselves who are over the age of 18 years, the Smithtown Central School District herewith gives notice of intention to provide, release, or publish in newsletters, school or student newspapers, magazines, yearbooks, Internet, or other publications, daily or weekly newspapers, athletic programs, news releases and/or all of the following information pertaining to students as may be appropriate under the circumstances: Name, age, height, weight, grade, major field of study, participation in recognized sports programs, academic honors, achievements, awards, scholarships, and similar information under Title 45. Parents who do not desire release of any of the above directory information must make a specific request in writing to the Superintendent of Schools. Failure to make such a request shall be deemed consent to release, provide or publish the directory information.

## PARENTS FOR MEGAN'S LAW

In order to provide parents/guardians and residents with information concerning convicted sex offenders, the school district is utilizing a no-cost sex offender alert notification program. Upon voluntary registration, Parents for Megan's Law (PFML) will e-mail district residents information about newly registered convicted sex offenders and direct residents to the Parents for Megan's Law website, where they can access a full copy of the notification. If you have not already registered to receive these notifications, please contact the Parents for Megan's Law Helpline at (631) 689-2672 or go to the Parents for Megan's Law website at [www.parentsformeganslaw.org](http://www.parentsformeganslaw.org) and click the "E-mail Alert link."



## DIPLOMA REQUIREMENTS – CLASS OF 2012

<u>REGENTS DIPLOMA</u>		<u>ADVANCED REGENTS DIPLOMA</u>	
<u>REQUIRED COURSES</u>	<u>Credits</u>	<u>REQUIRED COURSES</u>	<u>Credits</u>
English	4	English	4
Social Studies	4	Social Studies	4
Mathematics	3(A)	Mathematics	3(A)
Science	3(A)	Science	3(A)
Health	.5	Health	.5
The Arts	1	The Arts	1
<b>CORE CREDITS -Subtotal</b>	<b><u>15.5</u></b>	<b>CORE CREDITS-Subtotal</b>	<b><u>15.5</u></b>
Languages other than English	1	Languages other than Eng.	3(B)
Physical Education	2	Physical Education	2
Electives	<u>3.5(D)</u>	Electives	<u>1.5(D)</u>
<b>TOTAL CREDITS: (required minimum)</b>	<b>22</b>	<b>TOTAL CREDITS: (required minimum)</b>	<b>22</b>
<b>REGENTS EXAMS</b>			
REGENTS ENGLISH	YES	REGENTS ENGLISH	YES
REGENTS MATH	YES	REGENTS MATH	YES
2nd & 3rd REGENTS MATHEMATICS	NO	2nd REGENTS MATH	YES
REGENTS GLOBAL HISTORY & GEOGRAPHY	YES	3rd REGENTS MATH	YES
REGENTS US HISTORY & GOVERNMENT	YES	REGENTS GLOBAL HISTORY & GEOGRAPHY	YES
REGENTS SCIENCE	YES	REGENTS US HISTORY & GOVERNMENT	YES
2ND REGENTS SCIENCE	NO	REGENTS SCIENCE	YES
LANGUAGES OTHER THAN ENGLISH	(C)	2ND REGENTS SCIENCE	YES
		LANGUAGES OTHER THAN ENGLISH	YES(B)

### FOOTNOTES FOR DIPLOMA REQUIREMENTS CHART

- A. Students may meet the learning standards in technology, either through a course in technology education or through an integrated course combining, technology with mathematics and/or science. A commencement-level course in technology education may be used as the third unit of credit in science or mathematics, but not both.
- B. To earn the advanced designation, the student must complete one of the following:
  - 1. A Language other than English (LOTE) (total of 3 credits) and pass FLACS checkpoint B exam.
  - 2. Career and Technical Education (CTE) (5 credits), including one credit in a Language other than English.
  - 3. The Arts (5 credits), including one credit in a Language other than English.
- C. Students must pass LOTE course in grade 7 & 8 as well as pass the FLACS checkpoint A Exam in grade 8 or a Level 1 high school language course in order to earn one unit of credit toward the high school diploma.
- D. Elective credit can be earned for any course which is not being used to fulfill a core credit requirement (Arts, CTE, Math Science, English, Social Studies, LOTE)
- E.
  - 1. Students who first enter grade 9 in 2008 and thereafter must score 65 or above on 5 regents exams to receive a Regents diploma and 8 regents exams and FLACS checkpoint B exam to receive an Advanced Regents diploma.
  - 2. Students with disabilities who first enter grade 9 in September 2005 and thereafter, a score of 55-64 may be considered a passing score on any Regents Exam required for graduation with a local diploma. The Regents Competency Test safety net is available only to students with disabilities who first entered grade 9 prior to September 2011.

**Good Luck Class of 2012**

## FAMILY EDUCATION RIGHTS AND PRIVACY ACT

Parents and eligible students\* have the following rights under the Family Educational Rights and Privacy Act of 1974 (FERPA).

- ⇒ The right to inspect and review the student's education record.
- ⇒ The right to exercise a limited control of other people's access to student records.
- ⇒ The right to seek to correct the student's education record if believed to be in error.
- ⇒ The right to report violations of FERPA to the appropriate federal agency.
- ⇒ The right to be informed about FERPA rights.

\*All rights and protections given parents under the FERPA and this procedure transfer to the student when he or she reaches the age of 18 or enrolls in a post-secondary school. The student then becomes an "eligible student." The following information is designated as student "Directory Information:" Student's name, address, date of birth, grade level, extra-curricular participation, awards or honors, photograph, height and weight ( if a member of an athletic team), previous school attended, parent's name. "Directory Information" may be disclosed without prior written consent. **Parents or eligible students will have two weeks from the beginning of the school year or date a student enrolls** to advise the school district, in writing, of any and all items they refuse to permit the district to designate as directory information for the balance of the school year.

## SECTION 504 OF THE REHABILITATION ACT OF 1973

The Smithtown Central School District, Smithtown, New York, hereby gives notice that it does not discriminate on the basis of handicap in violation of Section 504 of the Rehabilitation Act of 1973. The District further gives notice that it does not discriminate on the basis of handicap in admission or access to its programs and activities, including vocational education programs. No person shall be denied employment solely because of any physical, mental or medical impairment which is unrelated to the person's ability to engage in the activities involved in the job for which application has been made.

Inquiries concerning this policy may be referred to Dr. Brenda A. Clark, Section 504 Coordinator, 26 New York Avenue, Smithtown, New York.

The secondary vocational education opportunities available to District residents under the age 21 are listed in the handbooks and curriculum guides prepared by the high school.

## PUBLIC NOTIFICATION

The Smithtown Central School District hereby advises students, parents, employees, job applicants, and the general public that it offers employment and educational opportunities, including vocational education, without regard to age, sex race, color, religion, creed, national origin, marital status, veteran status, or disability. Inquiries regarding this nondiscrimination policy may be directed to:

- A. Title IX Coordinator & Compliance Officer  
Mr. Vincent Fantauzzi  
Administrator for Grants and Human Resources  
Smithtown Central School District  
26 New York Avenue Unit 1  
Smithtown, New York 11787  
Telephone (631) 382-2176
- B. Section 504 Coordinator & Compliance Officer  
Dr. Brenda A. Clark  
Administrator for Special Education & Special Services  
Smithtown Central School District  
26 New York Avenue  
Smithtown, New York 11787  
Telephone (631) 382-2071

## DISCRIMINATION COMPLAINT PROCEDURES

### Level One:

1. Any individual, including but not limited to students and employees of the School District, who wishes to file a complaint regarding discrimination shall make such complaint in writing on forms available in any school office, Central Office, Transportation Office, Central Warehouse, Facilities Office or Food Service Office.
2. The written complaint form should then be sent to the School District Title IX Compliance Officer and/or the School District Section 504 Compliance Officer, as appropriate.
3. The Compliance Officer will then:
  - a. Investigate, within 10 days of receipt of the complaint, the circumstances of the complaint.
  - b. Render a decision, within 20 days of receipt of the complaint, and notify all parties of the decision.
  - c. Provide all parties 10 days to respond to the decision before it becomes final.

*CONTINUED ON NEXT PAGE*

## Centralized Registration

The Smithtown Central School District utilizes a centralized registration process. **All registration takes place at the Joseph M. Barton Building, 26 New York Avenue, Smithtown, NY, (631) 382-2024. Registration is open from 8:30 to 11:30 AM and 1:00 to 3:00 PM daily (Registration in July and August is from 8:30 to 11:30 AM and 1:00 to 2:00 PM).** Listed below are the items necessary to complete registration. Parents must bring this information with them at the time of registration. **PLEASE NOTE:** Registration forms are now on our website. You can download them at: [www.smithtown.k12.ny.us](http://www.smithtown.k12.ny.us).

1. A child's original birth certificate (**raised seal**), a Baptismal record or passport.
2. A record from physician with all inoculations listed with a doctor's signature or stamp.  
**Immunization Guidelines:**  
**3 doses of Diphtheria Toxoid, Tetanus Toxoid and Pertussis (DPT)**  
**1 dose Tdap for children born on or after January 1, 1994 and entering 6th grade**  
**3 doses of polio (usually OPV or IPV)**  
**1 dose live measles after age of 12 months**  
**2 doses measles for all children born after January 1, 1985**  
**1 dose live rubella after age of 12 months**  
**1 dose live mumps after age of 12 months**  
**3 doses Hepatitis B for children born on or after 1/1/93**  
**1 dose of Varicella (chickenpox) for children born on or after January 1, 1998 and 6th Graders born after 1/1/1994 entering school on or after 9/1/2005.**
3. Be prepared to answer questions concerning child's health history.
4. **Two proofs of residency** (with your name and address). The **most recent** utility bills (i.e. **home** telephone, Cablevision, LIPA, National Grid, water), tax bill, mortgage statement, homeowners' insurance, deed, signed lease including landlord's phone number. **Please note:** when no lease is in effect, you'll need a notarized statement of residency from the landlord with **two original** proofs of their residency. The District does not accept driver's license, cell phone bill, auto insurance card, credit card bill, checking or bank account statements as proof of residence.
5. Proof of guardianship or custody, if applicable.
6. Transcript, recent report card, IEP (if appropriate), and a testing record for secondary students.

## KINDERGARTEN REGISTRATION

The District will also hold a special registration period for the **2012-2013** kindergarten. Those students who will reach their 5th birthday on or before **December 1, 2012** are eligible to register. Registration will take place from **January 3-27 from 8:30 to 11:30 AM and 1:00 to 3:00 PM daily. The 2012-2013 K registration schedule is as follows:**

January 3 & 4 – Accomsett Elem.	January 18 & 19 – Nesconset Elem.
January 5 & 6 – Branch Brook Elem.	January 20 & 23 – St. James Elem.
January 9 & 10 – Dogwood Elem.	January 24 & 25 – Smithtown Elem.
January 11 & 12 – Mills Pond Elem.	January 26 & 27 – Tackan Elem.
January 13 & 17 – Mt. Pleasant Elem.	

**On Wednesday, January 11 and Thursday, January 26 evening registrations will be held to accommodate working parents. The evening registrations will start at 5:30 PM and conclude at 8:00 PM.**

## DISCRIMINATION COMPLAINT PROCEDURES *CONTINUED FROM PAGE 24*

### Level Two:

1. If any party disagrees with the Level One decision, then the Compliance Officer shall so advise the Superintendent of Schools within 5 days of receipt of the party's written statement of disagreement.
2. The Superintendent of Schools will review the matter and shall render a decision within 10 days of receipt of notice from the Compliance Officer of the party's disagreement.
3. The decision of the Superintendent of Schools will be based on the written submissions of all parties. All parties, and the Compliance Officer, shall receive a copy of the decision of the Superintendent of Schools.

### Appeal Procedures:

1. Any party may appeal the decision of the Superintendent of Schools by filing a petition/appeal with the New York State Commissioner of Education, New York State Education Department, Albany, New York 12234.
2. Any party may also file an administrative complaint with any of the following agencies:
  - a. United States Department of Education  
Office For Civil Rights  
32 Old Slip  
New York, New York 10005
  - b. U.S. Equal Employment Opportunity Commission  
33 Whitehall Street  
New York, New York 10004
  - c. New York State Division of Human Rights  
175 Fulton Avenue  
Hempstead, New York 11550

## Special Education / Special Services

26 New York Avenue, Smithtown, NY 11787, 382-2070 / Fax: 382-2083

The Reauthorized Individuals with Disabilities Act of 2004 (IDEA) mandates that all students receive a free and appropriate education in the least restrictive environment.

The Committee on Special Education (CSE), for children ages 5-21, and the Committee on Preschool Education (CPSE), for children ages 3-5, is responsible for evaluating information presented concerning a child and determining eligibility for special education programs and/or services. The determination of the CSE/CPSE will be consistent with the continuum of services outlined in the Commissioner's Regulations and be based on such items as chronological age; learning rate; academic functioning; social/emotional development; physical development; and management needs. Students are placed into special education programs only when the severity of their disability is such that education in a regular class cannot be achieved. Related Services may be provided in conjunction with a mainstream education program or with other special education programs and services.

***In grades Kindergarten to 12:*** If you suspect your child is having academic difficulty, the best place to begin is with your child's classroom teacher. The building's Instructional Support Team (IST) will address any concerns and implement modifications, remedial services and strategies. If you feel your child may need the provision of special education services and/or programs, you must notify in writing either the Special Education Office or your child's building principal. Upon receipt of your written consent, the CSE will evaluate your child. Mandated components of the CSE evaluations are medical, psychological, social history, and educational assessment. However, additional evaluations may also be requested based on the area(s) of concern.

***At the Preschool Level:*** If you have a preschool child and you are concerned about his/her speech, language, learning, physical or behavioral development, you may want to talk to your family doctor first to determine if your child is within the normal developmental scales. If you feel your child may need the provision of special education services and/or programs, you must notify in writing the Preschool Special Education Office and register your child at the Central Registration Office. At registration, you will be asked to choose an evaluator and sign a consent so the evaluation process may begin. If your child is receiving Early Intervention (EI) services, please advise us at the time of your registration. Mandated components of the CPSE evaluations are medical, psychological, social history, and an observation. However, additional evaluations may also be requested based on the area(s) of concern.

***The Committee members shall include,*** but not be limited to, the parent/guardian, at least one regular education teacher of the student, one special education teacher of the student, a school psychologist, a representative of the school district who is qualified to provide or supervise special education, a school physician (if specifically requested in writing by parent/guardian or member of the school at least 72 hours prior to the meeting), an additional parent member of a student with a disability residing in the school district or a neighboring school district (parent/guardian must notify in writing if they wish to waive their right to an additional parent member), other persons having knowledge or special expertise regarding the student, and if appropriate, the student.

If your child is eligible to receive special education services and/or programs, the CSE/CPSE makes the recommendations to the Board of Education (BOE). Upon the BOE's approval, the Committee develops and implements an appropriate Individual Education Plan (IEP), for resident students, and an Individual Education Services Plan (IESP), for non-resident students. At least once a year your child's IEP/IESP will be reviewed. However, you may request in writing a meeting at anytime.

If your child is illegible to receive special education services and/or programs and you disagree with the decision of the Committee, you may request mediation and/or an impartial hearing.

***Parents/Guardians who place their children in non-public schools*** must contact the school district where the nonpublic school is located to request an evaluation. If your child receives special education services and you want your child to continue receiving those services while enrolled in the nonpublic school, you must request those services in writing **no later than June 1** before the school year in which services are to be provided. *The required form needed by June 1 can be printed from our website:* **Website: <http://teacher2.smithtown.k12.ny.us/SpecialEducationDepartment>**

**The Smithtown Central School District Board of Education annually adopts policies for the District. A copy of the District policy book is available for review in each building. The specific policies highlighted below are those of primary interest to the school/community.**

### **STUDENT BICYCLE USE**

Students riding their bicycles on school property must comply with New York State Vehicle and Traffic Law 1238 which requires that children between the ages of 1 year and 14 years wear a safety helmet that meets ANSI 190.4 Safety Standards or a comparable standard.

### **STUDENT ATTENDANCE**

Parents/guardians are responsible, under the School Attendance Laws of New York State, for their children's regular attendance and punctuality. Excused absences include: personal illness, illness or death in the family, impassable roads or unsafe travel conditions, religious observance, quarantine, required court appearances, medical appointments, approved court appearances, approved cooperative work programs, military obligations, or participation in school sponsored and approved activities. If a student is or will be absent, his/her parent/guardian is expected to phone the school on the *first day* of such absence, and to indicate the anticipated duration of the absence. Furthermore, a written excuse must accompany the child when returning to school after an absence. The reason for the absence and dates covered must be included in the note. The note must be signed by the parent or guardian.

In compliance with the New York State law, the District adopted a comprehensive attendance policy that was implemented in the 2003-2004 school year. Current attendance requirements are clearly delineated in the secondary school handbooks.

### **EXCLUSION OF STUDENTS POSSESSING FIREARMS**

The Board of Education has determined that if and when a student brings or has in his/her possession a weapon, as the term is defined in Title 18 U.S.C. section 921, to a school in the Smithtown Central School District, that student shall be excluded from school for a period not less than one year. The Superintendent of Schools may modify such exclusion requirement on a case-by-case basis in accordance with applicable federal and state laws, rules and regulations and after affording the student such due process as may be required.

Legal Reference: Public Law 103-227, Title X, Part B

### **SEXUAL HARASSMENT**

The Board of Education is committed to safeguarding the right of all employees, students, or members of the public within the School District to an environment that is free from all forms of sexual harassment.

All individuals associated with this District, but not necessarily limited to the Board of Education, the administration, the staff, students, and members of the public while on school property or on a school related activity are expected to conduct themselves at all times so as to provide an atmosphere free from sexual harassment.

Therefore, the Board condemns and prohibits all behavior of a sexual nature which is either designed to extort sexual favors or which has the purpose or effect of creating an intimidating, hostile or offensive environment. Any person who engages in sexual harassment while acting as a member of the school community will be in violation of this policy.

Sexual harassment includes, but is not limited to unwelcome flirtation, sexual advances, propositions, continual or repeated verbal abuse of a sexual nature, use of sexually degrading words or actions and the display of sexual suggestive pictures.

Sexual harassment in the school, on District property, or on a school related activity by any employee, student, or member of the public is a serious violation for which the appropriate disciplinary action will be taken and may lead to personal, legal and financial liability.

Any employee, student, or member of the public who believes that he/she has been subjected to sexual harassment should make a complaint immediately to any of the following: his/her supervisor, principal, Administrator for Grants and Human Resources, or his/her designee.

Complaints will be investigated promptly and corrective action will be taken where appropriate. No member of the school community will suffer retaliation or intimidation as a result of using the internal complaint procedure.

Legal References: Title VII 703, Civil Rights Act of 1964 as amended 45 Federal Regulation 74676 issued by EEOC, Section 296 (1)(a) of the NYS Executive Law.

## DRUG FREE SCHOOLS

The Board of Education of the Smithtown Central School District is committed to the prevention of alcohol, tobacco, and other substance use/abuse. This policy describes the philosophy of the Smithtown Central School District and the program elements the District will use to promote healthy life styles for its students and staff and to inhibit the use/abuse of alcohol, tobacco, performance enhancing drugs, and other substances.

No person may use, possess, sell, or distribute alcohol or other controlled substances, nor may use or possess drug paraphernalia, on school grounds or at school-sponsored events, except drugs as prescribed by a physician. The inappropriate use of prescription and over-the-counter drugs shall also be prohibited.

Additionally, the following persons shall be prohibited from entering school grounds or school-sponsored events: any person exhibiting behavior, or physical characteristics indicative of having used or consumed alcohol or other psychotropic substances.

The District will use the following principles as guides for the development of its substance use/abuse prevention efforts and for any disciplinary measures related to alcohol and other substances:

- 1 Alcohol, tobacco, and other substance use/abuse is preventable and treatable.
- 2 Alcohol and other substance use/abuse inhibits the District from carrying out its central mission of educating students.
- 3 The behavior of the Board of Education, the administration, and all school staff should model the behavior asked of students.
- 4 While the District can and must assume a leadership role in alcohol, tobacco, and other substance use/abuse prevention, this goal will be accomplished only through coordinated, collaborative efforts with parents, students, staff and the community as a whole.

## NO CHILD LEFT BEHIND ACT OF 2001

According to the **No Child Left Behind Act of 2001**, public schools are now legally required to release names, addresses, and telephone numbers of secondary students to military recruiters or institutions of higher education upon request. Parents or guardians may request in writing, that their child's name, address, and telephone listing not be released without prior written parental consent. These requests should be addressed to the Principal's Office, Smithtown High School West 100 Central Road, Smithtown, NY 11787-1696 or Smithtown High School East, 10 School Street, St. James, NY 11780-1800.

In addition, if your child attends a school that receives Title I federal funds, under No Child Left Behind federal legislation, you may request information regarding the qualifications of your child's teacher(s). This information includes the New York State license the teacher holds, as well as the degree, major, and field of discipline of the teacher's certification or degree. If you would like this information regarding your child's teacher(s), please submit your written request to: the Assistant Superintendent for Personnel Services, Smithtown Central School District, 26 New York Avenue, Smithtown, New York 11787.

To assure compliance with federal No Child Left Behind guidelines, the Board of Education has adopted a Parental Involvement Policy. It recognizes the rights of parents/guardians to be fully informed of all information relevant to their children who participate in programs and projects funded by Title I. A copy of the District policy book, which includes this policy, is available for review in each building.

## **CODE OF CONDUCT – SUMMARY**

In compliance with Project SAVE Legislation, Commissioner's Regulations, and Education Law, the Board of Education of the Smithtown Central School District adopted a District-wide Code of Conduct on June 26, 2001 which is reviewed and updated annually. It was developed by a broad-based committee that consisted of representation from all of the District's major constituencies -- teachers, administrators, board members, nurses, parents, students, secretaries, custodians, as well as police and community representatives.

### **Expectations**

The Code of Conduct is predicated on the District's commitment to provide a high quality educational program in a safe and orderly school environment, free of disruptions that interfere with the educational process. Responsible behavior by students, teachers, other district personnel, parents and visitors is essential to achieving this goal. Smithtown has a longstanding set of expectations for conduct on school property and at school functions. These expectations are based on the principles of civility, mutual respect, citizenship, character, tolerance, honesty and integrity. The Code of Conduct clearly defines the expectations for acceptable conduct, identifies possible consequences of unacceptable conduct, and ensures that discipline, when necessary, is administered promptly and fairly.

### **Rights and Responsibilities**

To ensure a common language, the code begins with definitions. It goes on to enumerate Student Rights and Responsibilities, as well as the expectations for the District's essential partners -- Parents, Teachers, Principals, Guidance Counselors, Superintendent, and Board of Education. The code also outlines a student dress code. All students are expected to give proper attention to personal cleanliness and to dress appropriately for school and school functions. Each building principal or his or her designee is responsible for informing all students and their parents of the student dress code at the beginning of the school year and any revisions to the dress code made during the year.

### **Prohibited Student Conduct**

The Code of Conduct also describes prohibited student conduct, and discusses reporting violations, disciplinary penalties, procedures, and referrals. All students are expected to conduct themselves in an appropriate and civil manner, with proper regard for the rights and welfare of others. Consequences for disorderly conduct are to be imposed in a prompt, fair and lawful manner, maintaining the student's dignity. In addition, all students are expected to promptly report violations of the Code of Conduct to a teacher or administrator. Any student observing a student possessing a weapon, alcohol or illegal substance on school property or at a school function shall report this information immediately to a teacher or administrator.

### **Students with Disabilities**

The Code of Conduct also addresses the discipline of students with disabilities. If the conduct of a student is related to a disability or suspected disability, the student shall be referred to the Committee on Special Education. Discipline, if warranted, will be administered consistent with the separate requirements of the Code of Conduct for disciplining students with a disability. A student identified as having a disability shall not be disciplined for behavior related to his/her disability.

### **Searches**

Corporal punishment, any act of physical force upon a student for the purpose of punishing that student, is strictly forbidden. District officials may conduct searches of students and their belongings if there is reasonable suspicion to believe that the search will result in evidence that the student violated the law or the District Code of Conduct.

### **Visitors to the Schools**

To minimize disruption of the educational process and to ensure a safe environment for all, limits are placed concerning visits to the schools. Any requests for visitation must be pre-arranged with the building principal or his/her designee. The building principal or his/her designee is responsible for all persons in the building and on the grounds. All visitors are expected to abide by the rules for public conduct contained in the Code of Conduct. All persons on school property or attending a school function shall conduct themselves in a respectful and orderly manner. The purpose of the code is to maintain public order and prevent abuse of the rights of others.

All members of the school community are expected to abide by the Code. Complete copies of the Code of Conduct are available for review in each school building.

# DIRECTORY OF SCHOOLS/ORGANIZATIONS

## SECONDARY SCHOOLS

**Smithtown High School East**  
10 School Street, St. James, NY 11780-1800

Tel: 382-2705

Principal: Edwin Thompson  
Asst. Principals: Michael Aleci  
Jason Pettis  
Robert Rose

**Smithtown High School West**  
100 Central Rd., Smithtown, NY 11787-1696

Tel: 382-2905

Principal: John Coady  
Asst. Principals: Daniel McCabe  
Cindy Nocero  
Derek Solomon

**Accompsett Middle School**  
660 Meadow Rd., Smithtown, NY 11787-1697

Tel: 382-2300

Principal: John Nocero  
Asst. Principal: Leon Beckerman

**Great Hollow Middle School**  
150 Southern Blvd., Nesconset, NY 11767-1700

Tel: 382-2805

Principal: John Scomillio  
Asst. Principal: Michael Freiberg

**Nesaquake Middle School**  
479 Edgewood Avenue, St. James, NY 11780

Tel: 382-5105

Principal: Kevin Simmons, Ed.D.  
Asst. Principal: Paul McNeil

## ELEMENTARY SCHOOLS

**Accompsett Elementary School**  
1 Lincoln St., Smithtown, NY 11787-1695

Tel: 382-4155

Principal: Jeanne Kull-Minarik  
Assistant Principal: Jill M. Kristoff

**Branch Brook Elementary School**  
15 Ridgely Rd., Smithtown, NY 11787-5399

Tel: 382-4205

Principal: Ireen Westrack

**Dogwood Elementary School**  
50 Dogwood Dr., Smithtown, NY 11787-2299

Tel: 382-4255

Principal: Renee Carpenter

**Mills Pond Elementary**  
246 Moriches Road, St. James, NY 11780-2158

Tel: 382-4305

Principal: Arlene Wild

**Mt. Pleasant Elementary School**  
33 Plaisted Ave., Smithtown, NY 11787-4786

Tel: 382-4355

Principal: Joseph Ierano

**Nesconset Elementary School**  
29 Gibbs Pond Rd., Nesconset, NY 11767-1035

Tel: 382-4405

Principal: Janine Lavery

**St. James Elementary School**  
580 Lake Ave., St. James, NY 11780-1999

Tel: 382-4455

Principal: MaryGrace Lynch

**Smithtown Elementary School**  
51 Lawrence Ave., Smithtown, NY 11787-3625

Tel: 382-4505

Principal: Paul Graf

**Tackan Elementary School**  
99 Midwood Ave., Nesconset, NY 11767-2099

Tel: 382-2675

Principal: Allyn Leeds, Ed.D.

## PTA PRESIDENTS

HSE: Ellen Ferrara (etony5@optonline.net)	979-1364
HSW: Margaret Keogh (kmbk175@optonline.net)	269-4401
AMS: Gay Campisi (agcampisi@verizon.net)	265-4631
GHMS: Chris Merlino (cmerl_5@yahoo.com)	366-6043
NMS: Vanessa Starr (vhfstarr@aol.com)	584-2019
AE: Jennifer Russo (jrusso530@aol.com)	265-0474
BB: Scott Boardman (president@bbpta.org)	560-5555
DE: Jennifer Murray (jmurray1021@verizon.net)	366-6230
MPE: Kerry DeJesus (ralphandkerry@optonline.net)	584-2094
MTP: Laurie Wallace (ljwall@optonline.net)	265-8522
NE: Amanda Slawinski (slawinski4@verizon.net)	360-4969
SJE: Christine Enges (cke318@optonline.net)	513-5996
SE: Michael Rhodes (bastorma@verizon.net)	361-5359
TE: Kris Reilly (kreillypta@optonline.net)	366-5702

## ORGANIZATIONS

### SMITHTOWN COUNCIL OF PTA'S

President: Debbie Mahoney (debbiemahoney@optonline.net)	366-2663
1st V.P.: Trish Kremmelbein (etkrem@aol.com)	724-2002
2nd V.P.: Ellen Kyranakis (mkyranakis@aol.com)	366-4499
Rec. Secy.: Monica Tetuan (mtetuan@hotmail.com)	724-7324
Corres. Secy.: Benita Hammer (hammer85@optonline.net)	738-1218
Treasurer: Jane-Marie Felice (mikfell777@aol.com)	724-7371
Past President: Maureen O'Connor (oconnors7@aol.com)	265-2148

### SEPTA

SEPTA Pres.: Suzanne Lerner (septapresident@yahoo.com) 382-9423

### SMITHTOWN COLLEGE SCHOLARSHIP COMMITTEE

Chairperson: Benita Hammer (hammer85@optonline.net) 738-1218

### SMITHTOWN FRIENDS OF MUSIC

President: Kathy Sullivan (SmithtownFriendsofMusic@yahoo.com) 265-0953

### SMITHTOWN CHILDREN'S FOUNDATION

Christine Fitzgerald (fitzybbcf@optonline.net)	584-9511
Christina Alcure (ccalcure@optonline.net)	724-5727

VISIT OUR WEBSITE:  
[www.smithtown.k12.ny.us](http://www.smithtown.k12.ny.us)

July 2011

S	M	T	W	T	F	S
3	4	5	6	7	8	9
10	11	12	13	14	15	16
17	18	19	20	21	22	23
24	25	26	27	28	29	30
31						

September 2011

S	M	T	W	T	F	S
4	5	6	7	8	9	10
11	12	13	14	15	16	17
18	19	20	21	22	23	24
25	26	27	28	29	30	

# August 2011

Sun	Mon	Tue	Wed	Thu	Fri	Sat
	1  <b>RAMADAN BEGINS</b>	2	3	4	5	6
7	8	9	10	11	12	13
14	15	16	17	18 <b>HS Football Begins</b>	19	20
21	22	23	24 <b>HSE Senior Parking Stickers</b>	25 <b>HSW Senior Parking Stickers</b>	26	27
28	29 <b>HS Fall Sports Begin PTA Council Mtg. -Presidents Only- 8PM</b>	30 <b>AMS Grade 6 Orientation 10 - 11:30 am HSE Senior Parking Stickers</b>	31 <b>SE New Student Orientation 10 am GH New Student Open House 10-11:30 HSW Freshman Orientation IAB Executive Comm. Mtg. @NYA 8-10am  END OF RAMADAN</b>			

August 2011

S	M	T	W	T	F	S
	1	2	3	4	5	6
7	8	9	10	11	12	13
14	15	16	17	18	19	20
21	22	23	24	25	26	27
28	29	30	31			

October 2011

S	M	T	W	T	F	S
						1
2	3	4	5	6	7	8
9	10	11	12	13	14	15
16	17	18	19	20	21	22
23	24	25	26	27	28	29
30	31					

# September 2011

Sun	Mon	Tue	Wed	Thu	Fri	Sat
				1 AE New Student/K Orientation 11 am DE K Supply Drop Off 10 am SE K Orientation SJE New Student Orientation 10:30 am AMS Open House 9:30 - 11:45 am NMS Grade 6 & New Student Orientation - 9-10 am HSW Parking Stickers HSE Freshman Orientation	2 TE K Supply Drop Off 10-11am TE New Student Orientation Gr.1-5 11am	3
4	5 <b>LABOR DAY</b>	6 <b>Superintendent's Conference Day STAFF ONLY</b> BB Supply Drop Off 11 am	7 <b>First Day of School</b> MPE Boo Hoo Breakfast 9:40 am	8 SE Back to School Night Grades 4 & 5 NMS ID Pictures HSW Senior Retakes Arts-In-Ed Mtg. @ NYA 10 am MS Fall Sports Begin	9 DE PTA Committee Chair Mtg. 10 am AMS, GH Student ID Photos GH Music Photos NMS ID Pictures HSW Senior Retakes	10
11	12 BB Wrap Sale begins through 10/3 MPE Gift Wrap Sale Begins SE Back to School Night Grades 2 & 3 TE New K Meet & Greet 10:30-11:30am TE Book Fair through 9/20 HSE, HSW Senior Retakes College Scholarship Mtg. - NYA SEPTA Mtg. 7 pm	13 <b>Board of Education Meeting - 8 PM @NYA</b> AE, BB PTA Mtg. DE, MPE, NE PTA Mtg. 7 pm SE PTA Mtg. 7:30 pm MTP Meet the Teacher Night Gr. 3-5 SJE PTA Room Rep Tea TE Grade K-2 Open House GH Gr. 8 Class Picture HSE Senior Retakes	14 NE Class Parent Tea 3 pm AMS, GH PTA Mtg. NMS PTA Mtg. 7:30 pm ESL Pizza Night 6:30 pm HSW Library  ELEVATION OF THE CROSS	15 AE Class Parent Mtg. MTP Meet the Teacher Night Gr. K-2 SE Back to School Night Grades K & 1 TE PTA Mtg. NMS Yearbook Photos HSE Meet The Teacher Night HSW PTSA Mtg.	16 DE Class Parent Mtg. 10 am MPE Constitution Day SE Family Night at Adventureland NMS Yearbook Photos	17
18	19 MPE Room Rep Tea 10am PTA Council Mtg. - 8 pm	20 AE Meet the Teacher Grades 3-5 BB, MPE, SJE Meet the Teacher Gr. K-2 DE Meet the Teacher Grades 3-5 7pm MTP PTA Mtg. NE Meet the Teacher Night 7 pm SJE Meet the Teacher Grades K-2 SJE PTA Chairperson Tea TE Grade 3-5 Open House	21 AMS Grade 6 Meet the Teacher Night 7:30 pm GH Meet the Teacher Night Grade 6 (Parents Only) 7:15 pm NMS Meet the Teacher Night Grade 6 & Team 7A	22 AMS Yearbook Photos HSE Underclass Photos HSE PTSA Mtg. 12th Grade Night: College Application Process @ HSE - 7 pm HSW Safe Driving IAB Mtg. @ Smithtown Landing Country Club 3-5 pm Supt.. PTA Mtg. 10 am	23 BB School Photos MPE Gift Wrap Sale ends MPE Spirit Day SJE Grade K Sports Night 6 pm AMS Yearbook Photos HSE Underclass Photos	24 HSW Homecoming
25	26 AE Chairperson Mtg. 7pm AE Summer Reading Breakfast 8:30 am DE Meet the Teacher Night Gr. K-2 - 7pm TE Class Parent Tea 3:45pm GH Yearbook Photos GH Meet the Teacher Night Grade 7 (Parents Only) 7:15 pm	27 <b>Board of Education Meeting - 8 PM @NYA</b> AE Meet the Teacher Grades K-2 BB, MPE, SJE Meet the Teacher Grades 3-5 DE K Parent Tea 10 am GH Yearbook Photos HSE Safe Driving	28 MTP Grade 5 Bagel Breakfast	29 <b>ROSH HASHANAH</b>	30 <b>ROSH HASHANAH</b>	

September 2011

S	M	T	W	T	F	S
4	5	6	7	8	9	10
11	12	13	14	15	16	17
18	19	20	21	22	23	24
25	26	27	28	29	30	

November 2011

S	M	T	W	T	F	S
6	7	8	9	10	11	12
13	14	15	16	17	18	19
20	21	22	23	24	25	26
27	28	29	30			

# October 2011

Sun	Mon	Tue	Wed	Thu	Fri	Sat
						1
2	3 MPE School Photos HSW Underclass Photos SEPTA Mtg. 7 pm	4 AE Plant A Bulb AE, BB, TE PTA Mtg. NE PTA Mtg. 10 am DE, SJE PTA Mtg. 7 pm SE PTA Mtg. 7:30 pm HSW Underclass Photos	5 DE School Photos SE School Pictures K-2 AMS Gr. 7&8 Meet the Teacher Night 7:30 pm GH Meet the Teacher Night Grade 8 (Parents Only) 7:15 pm NMS Meet the Teacher Night Gr. 8 & 7B	6 AE Flower Sale DE School Photos SE School Pictures Gr. 3-5 HSW Faculty/Staff Photos HSW Back to School Night Arts-In-Ed Mtg. @ NYA 10 am	7 BB Class Parent Tea DE School Photos MTP Road Race/Peace Day HSE Faculty Photos	8 <b>YOM KIPPUR</b>
9	10 <b>COLUMBUS DAY</b>	11 <i>Board of Education Meeting - 8 PM @NYA</i> MPE PTA Mtg. 10 am MTP PTA Mtg. MTP Road Race (Rain Date) SJE Picture Day	12 NE, SJE, TE Picture Day MTP Road Race (2nd Rain Date) AMS, GH PTA Mtg. NMS PTA Mtg. 10 am SE Harvest Day	13 MPE Grade 5 Sports Night 7-8pm HSW LOTE HS Inductions  SUKKOT (begins sunset 10/12)	14 AE Beautification Day MTP 50th Anniversary Celebration SE Square Dance SJE Grade 1 Sports Night 7pm DE PTA Grade 5 Sports Night 7 pm SUKKOT	15 PSAT @ HSE & HSW
16	17 SE PARP begins through 10/28 HSE Spirit Week through 10/22 PTA Council Mtg. - 8 pm College Scholarship Mtg. - NYA	18 BB Book Fair	19 BB Book Fair GH Principal's Coffee Hour 9:45 am	20 BB Book Fair HSE LOTE HS Induction HSE, HSW PTSA Mtg. IAB Mtg. @HSW Library 3-5pm Supt. PTA Mtg. 10 am SHEMINI ATZERET begins sunset 10/19	21 BB Haunted Halls MTP 50th Anniv. Celebration (Rain Date) HSE PEP Rally  SIMCHAT TORAH (begins sunset 10/20)	22 HSE Homecoming Parade
23	24 Red Ribbon Week through 10/28	25 <i>Board of Education Meeting - 8 PM @NYA</i> DE Blood Drive 5-9 pm	26 AE School Pictures MTP AIS Tea	27 AE School Pictures SE PARP Family Night SJE Blood Drive Mini-Collega Day @ HSE & HSW	28 NE, SJE Fall Festival AMS Grade 6 Dance 7-9 pm GH Grade 6 Dance 7-9 pm GH - Ryan's Story NMS Grade 6 Halloween Social HSE Spooky Hallways	29 AE Carnival
30	31 AE, SE Ragamuffin Parade BB Costume Parade - DE Pumpkin Patch MPE, SJE Halloween Parade MTP Fall Festival Parade K-5 TE Parade 10 am GH Spooky Story Telling HSW Safe Halloween					

October 2011

S	M	T	W	T	F	S
2	3	4	5	6	7	8
9	10	11	12	13	14	15
16	17	18	19	20	21	22
23	24	25	26	27	28	29
30	31					

# November 2011

December 2011

S	M	T	W	T	F	S
4	5	6	7	8	9	10
11	12	13	14	15	16	17
18	19	20	21	22	23	24
25	26	27	28	29	30	31

Sun	Mon	Tue	Wed	Thu	Fri	Sat
		<p>1</p> <p>AE, BB PTA Mtg. MPE, SJE Food Drive through 11/18 SJE PTA Mtg. 10 am DE, NE PTA Mtg. 7 pm SE, TE PTA Mtg. 7:30 pm HSW Club Photos</p> <p>ALL SAINTS DAY</p>	<p>2</p> <p>BB Blood Drive MTP Pictures AMS, GH Yearbook Photo Retakes HSE Underclassmen Photo Retakes HSW Underclass Photos</p>	<p>3</p> <p>MTP Pictures HSE Fall Drama Production Arts-In-Ed Mtg. @ NYA 10 am</p>	<p>4</p> <p>AE Game Night BB Photo Retake Day MTP Pictures DE PTA Grade 4 Sports Night SE Explorer Day SJE Grade 2 Sports Night 7pm HSW Thespians Senior Show HSE Blood Drive HSE Fall Drama Production</p>	<p>5</p> <p>SAT @ HSW HSE Fall Drama Production HSW Thespians Troupe</p>
<p>6</p> <p>EID AL-ADHA</p>	<p>7</p> <p>MPE PARP Kick Off SEPTA Mtg. 7 pm</p>	<p>8</p> <p><b>Superintendent's Conference Day</b> <b>STAFF ONLY</b> <i>Board of Education Meeting - 8 PM @NYA</i> TE Blood Drive</p> <p><b>ELECTION DAY</b></p>	<p>9</p> <p>MPE Grade 4 Sports Night AMS, GH PTA Mtg. STEM Careers -Lunch &amp; Learn @ HSW Library</p>	<p>10</p> <p>SE Visit from Armed Services Gr. 2-5 TE Square Dance</p> <p>END OF FIRST QUARTER</p>	<p>11</p> <p><b>VETERANS' DAY</b></p>	<p>12</p>
<p>13</p>	<p>14</p> <p>DE Picture Re Take Day DE PTA Food Drive SE Clothing Drive through 11/18 AMS Cool to be Kind Week MS Early Winter Sports Begin College Scholarship Mtg. - NYA</p>	<p>15</p> <p>MPE PTA Mtg. 7 pm MTP PTA Mtg.</p>	<p>16</p> <p>NE Blood Drive 4 - 8:30 pm AMS Principal's Coffee 8 am NMS PTA Mtg. 7:30 pm NMS All Star Ceremony Pd. 1 HS Winter Sports Begin</p>	<p>17</p> <p>ISE Health &amp; Wellness Fair IAB Off Site Mtg. @ SCNB Smithtown 5:30-7:30 pm HSE, HSW PTSA Mtg. 9th Grade Info Night @ HSW 7 pm Supt. PTA Mtg. 10 am</p>	<p>18</p> <p>SJE Grade 3 Sports Night 7pm AMS Gr. 7 &amp; 8 Dance 7-9 pm GH Grade 7 Dance 7-9 pm NMS Picture Retake Day</p>	<p>19</p>
<p>20</p>	<p>21</p> <p>AE Book Fair Barnes &amp; Noble NE Gift Wrap Pickup 3:30 - 5:30 pm PTA Council Mtg. - 8 pm</p>	<p>22</p> <p><i>Board of Education Meeting - 8 PM @NYA</i> NE Photo Re-take day GH MVTP Breakfast 7:50 am</p>	<p>23</p> <p>GH Team Fusion "Themes of Humanity" HSW Blood Drive</p> <p>EMERGENCY PREPAREDNESS DRILL</p>	<p>24</p> <p><b>THANKSGIVING RECESS</b></p>	<p>25</p>	<p>26</p>
<p>27</p>	<p>28</p> <p>Arts-In-Ed Grade 3 Program @ HSW</p>	<p>29</p>	<p>30</p> <p>NE Holiday Fair</p>			

November 2011

S	M	T	W	T	F	S
6	7	8	9	10	11	12
13	14	15	16	17	18	19
20	21	22	23	24	25	26
27	28	29	30			

January 2012

S	M	T	W	T	F	S
1	2	3	4	5	6	7
8	9	10	11	12	13	14
15	16	17	18	19	20	21
22	23	24	25	26	27	28
29	30	31				

# December 2011

Sun	Mon	Tue	Wed	Thu	Fri	Sat
				<p>1</p> <p>MPE Holiday Card Drive NE Holiday Fair AMS Students of Distinction Breakfast - 8 am Arts-In-Ed Mtg. @ NYA 10 am NYSSMA All-State Winter Conference (Rochester) through 12/4</p>	<p>2</p> <p><i>Elem. Par./Teach. Conf. 1/2 day</i> AE Children's Boutique 1-4 pm MPE Holiday Boutique (12-4) (6-8) SE Book Fair &amp; Holiday Boutique SJE PTA Food Drive through 12/16 TE Holiday Boutique GH Holiday Book Fair through 12/9 International Business Career Day @ HSW Library</p>	3
4	<p>5</p> <p><i>Elem. Par./Teach. Conf. 1/2 day</i> AE Children's Boutique 1-6 pm DE PTA Toy Drive SE Holiday Boutique MPE Holiday Fair 12-4 pm SE Snowman Project through 12/9 TE Holiday Boutique Fall Athletics Award Dinner 7:00 pm</p>	<p>6</p> <p><i>Elem. Par./Teach. Conf. 1/2 day</i> AE Children's Boutique 1-4 pm MPE Holiday Fair 12-4 pm NE PTA Mtg. 10 am SE, TE Holiday Boutique SE, TE PTA Mtg. 7:30 pm NMS Winter Concert 7:30 pm</p>	<p>7</p> <p>MTP PTA Blood Drive AMS Concert GH PTA Mtg. Business Olympics @ HSW Library 2-8pm</p>	<p>8</p> <p>AE Picture Retakes NE Barnes &amp; Noble Book fair HSE, HSW Winter Concert I</p> <p>FEAST OF IMMACULATE CONCEPTION</p>	<p>9</p> <p>MTP Picture Make-Ups SJE Grade 4 Sports Night 7 pm GH Grade 8 Dance 7-9 pm</p>	10
11	<p>12</p> <p>SJE Holiday Boutique through 12/15 AMS Concert</p>	<p>13</p> <p><i>Board of Education Meeting - 8 PM @NYA</i> AE PTA 7 pm AE Holiday Cooke Swap BB, MTP PTA Mtg. MPE PTA Mtg. 10 am HSE, HSW Winter Concert II</p>	<p>14</p> <p>AMS Concert GH Winter Concert NMD Winter Concert 7:30 pm NMS PTA Mtg. 10 am</p>	<p>15</p> <p>HSW Winter Concert III Supt. PTA Mtg. 10 am</p>	<p>16</p> <p>MPE Holiday Card Drive Ends</p>	17
18	<p>19</p> <p>AMS Concert GH Winter Concert HSE Sr. Connections Concert NMS Winter Concert 7:30 pm</p>	<p>20</p> <p>HSE, HSW Winter Concert IV</p>	<p>21</p> <p>GH Winter Concert NMS Winter Concert 7:30 pm</p> <p>HANUKKAH (eight day festival begins sunset Dec. 20)</p>	22	<p>23</p> <p>SE Holiday Sing-a-long</p>	24
25	26	27	28	29	30	31
<b>CHRISTMAS DAY</b>	<b>KWANZAA</b>	<b>WINTER RECESS</b>				

December 2011

S	M	T	W	T	F	S
4	5	6	7	8	9	10
11	12	13	14	15	16	17
18	19	20	21	22	23	24
25	26	27	28	29	30	31

February 2012

S	M	T	W	T	F	S
5	6	7	8	9	10	11
12	13	14	15	16	17	18
19	20	21	22	23	24	25
26	27	28	29			

# January 2012

Sun	Mon	Tue	Wed	Thu	Fri	Sat
1 <b>NEW YEAR'S DAY</b>	2 <b>WINTER RECESS</b>	3 AE Kindergarten Registration SE, TE PTA Mtg. 7:30 pm NE PTA Mtg. 7:00 pm	4 AE Kindergarten Registration AE New Year's Celebration GH PTA Mtg.	5 BB Kindergarten Registration Financial Aid Night @ HSW 7 pm Arts-In-Ed Mtg. @ NYA 10 am	6 BB Kindergarten Registration AE PTA Movie Night SE New Year's Ball GH Renaissance Assemblies	7  <b>ORTHODOX CHRISTMAS</b>
8	9 DE Kindergarten Registration AMS Concert College Scholarship Mtg. - NYA SEPTA Mtg. 10 am	10 <b>Board of Education Meeting - 8 PM @NYA</b> DE Kindergarten Registration BB, MTP PTA Mtg. AE, DE PTA Mtg. 10 am MPE, SJE PTA Mtg. 7 pm AE Reflections Breakfast 8:30 am AE Grade 5 Concert @ HSW	11 MPE Kindergarten Registration AMS PTA Mtg. GH Winter Concert NMS Winter Concert Evening Kindergarten Registration - 5:30 pm - 8:00 pm	12 MPE Kindergarten Registration HSE PTSA Mtg. Smithtown IDOL @ HSE 7 pm	13 MTP Kindergarten Registration DE Grade 3 PTA Sports Night 7 pm SJE Grade 5 Sports Night 7 pm	14
15	16 <b>MARTIN LUTHER KING JR. DAY</b>	17 MTP Kindergarten Registration MTP Blood Drive 4 pm - 9 pm SE Winter Concert Rehearsal @ HSW (4-5:30 pm)	18 NE Kindergarten Registration GH Winter Concert AMS Concert NMS PTA Mtg. 7:30 pm	19 NE Kindergarten Registration MPE Grade 3 Sports Night 7 pm HSW PTSA Mtg. Supt. PTA Mtg. 10 am IAB Mtg. @ HSE Library 3-5 pm	20 SJE Kindergarten Registration DE PTA Family Fun Night 7 pm NE Family Night 7-9 pm SJE Family Dinner	21
22	23 SJE Kindergarten Registration AMS Cool to Read Week PTA Council Mtg. - 8 pm SE Winter Concert HSW @ 7:30 pm MS Late Winter Sports Begin  HS Mid Term Exams	24 <b>Board of Education Meeting - 8 PM @NYA</b> SE Kindergarten Registration DE Grade 5 Winter Concert 7 pm GH Spelling Bee Finals	25 SE Kindergarten Registration GH Winter Concert	26 TE Kindergarten Registration AE Blood Drive SJE Wingo HSE Senior Banquet Evening Kindergarten Registration - 5:30 pm - 8:00 pm	27 TE Kindergarten Registration  <b>END OF SECOND QUARTER</b>  ➔	28
29	30 DE, MTP PARP through 2/17	31 BB Book Fair MPE Winter Concert Band/Orchestra 7 pm NE Winter Concert 7 pm				

January 2012

S	M	T	W	T	F	S
1	2	3	4	5	6	7
8	9	10	11	12	13	14
15	16	17	18	19	20	21
22	23	24	25	26	27	28
29	30	31				

March 2012

S	M	T	W	T	F	S
4	5	6	7	8	9	10
11	12	13	14	15	16	17
18	19	20	21	22	23	24
25	26	27	28	29	30	31

# February 2012

Sun	Mon	Tue	Wed	Thu	Fri	Sat
			1 BB Book Fair GH PTA Mtg.	2 BB Book Fair Arts-In-Ed Mtg. @ NYA 10 am	3 DE Grade 2 PTA Sports Night 7 pm MTP PARP Activity Night NE Talent Show 7-9 pm	4 Smithtown IDOL @ HSW 7 pm
5	6 DE PTA Book Fair through 2/10 SEPTA Mtg. 10 am	7 AE, BB, MTP PTA Mtg. MPE, SJE PTA Mtg. 10 am SJE Winter Concert SE, TE PTA Mtg. 7:30 pm DE, NE PTA Mtg. 7:00 pm DE PTA Book Fair Evening Event 6 pm NE Founder's Day GH Star Student Breakfast 7:50 am	8 AMS PTA Mtg. GH PTA Blood Drive 3:30 - 9:30 pm	9	10 AE PTA Family Fun Night GH Grade 6 Dance 7-9 pm	11 SE PTA School Fair 10-3 pm
12	13 PTA Council Mtg. - 8 pm College Scholarship Mtg. - NYA	14 <i>Board of Education Meeting - 8 PM @NYA</i>  BB Winter Concert MTP Winter Concert	15 HSE Jazz Festival NMS PTA Mtg. 10 am NMS All Star Ceremony Pd. 1 AMS Students of Distinction Breakfast - 8 am	16 MPE Grade 2 Sports Night 7pm SE Grade 5 Band/Orchestra Concert 7:30 pm TE Grade 4 Sports Night HSE, HSW PTSA Mtg. HSE Jazz Festival (Snow Date) Supt. PTA Mtg. 10 am	17 MTP PARP Ends	18
19	20 <b>PRESIDENTS' DAY</b>	21	22 <b>MID-WINTER RECESS</b>  ASH WEDNESDAY	23	24	25
26	27  <b>ORTHODOX LENT BEGINS</b>	28 <i>Board of Education Meeting - 8 PM @NYA</i>  AE PTA Winter Olympics	29			

February 2012

S	M	T	W	T	F	S
5	6	7	8	9	10	11
12	13	14	15	16	17	18
19	20	21	22	23	24	25
26	27	28	29			

April 2012

S	M	T	W	T	F	S
1	2	3	4	5	6	7
8	9	10	11	12	13	14
15	16	17	18	19	20	21
22	23	24	25	26	27	28
29	30					

# March 2012

Sun	Mon	Tue	Wed	Thu	Fri	Sat
				1 SJE Yankee Candle Sale through 3/9 Arts-In-Ed Mtg. @ NYA 10 am	2 DE PTA Talent Show @ NMS 7 pm NE "Shake & Roll" 7:30 pm	3
4	5 NE Book Fair through 3/9 SJE Food Drive through 3/19 HS Spring Sports Begin SEPTA Mtg. 10 am	6 BB, MTP PTA Mtg. AE, NE PTA Mtg. 10 am DE, SJE PTA Mtg. 7pm SE, TE PTA Mtg. 7:30 pm DE Pre K Sign Up NE PARP through 3/30	7 GH PTA Mtg. HSW - Musical - Seniors	8 MPE Grade 1 Sports Night 7 pm SJE Skate Night NE Book Fair Parent Night 7-9 pm TE Grade 3 Sports Night HSW - Musical	9 DE Grade 1 PTA Sports Night 7 pm GHMS Grade 7 Dance 7-9 pm HSW - Musical	10 SAT @ HSW HSW - Musical
11	12 College Scholarship Mtg. - NYA	13 <i>Board of Education Meeting - 8 PM @NYA</i> MPE PTA Mtg. 7 pm	14 AMS PTA Mtg. pm - HSW Library	15 AE Dine-O-Round GH Principal's Coffee 9:45 am Supt. PTA Mtg. 10 am HSW Senior Banquet HSE PTSA Mtg.	16 <i>Elem. Par./Teach. Conf. 1/2 day</i> AMS Musical 7:30 pm NMS Musical 7:30 pm Female Power Brunch @ HSE 9-2pm	17 AMS Musical 1:00 pm and 7:30 pm NMS Musical 1:00 pm
18	19 SJE PARP through 3/23 PTA Council Mtg. - 8 pm Winter Athletic Awards Dinner 7:00 pm	20 SJE PARP Night and Book Fair DE PTA Blood Drive 5-9 pm	21 BB Science Expo NMS PTA 7:30 pm HSE Young People's concert HSE/HSW Math Fun Night @ HSE	22 GH Musical 7:30 pm Mini-College Day @ HSE & HSW HSW Young People's Concert IAB 35th Anniversary HSW Fashion Show	23 DE Pre K Program MPE Dinner & Movie Night 6-9pm SE School Play GH Musical 7:30 pm	24 SE School Play GH Musical 1:00 pm HSE, HSW Gala Concert
25 HSE, HSW Gala Concert (Snow Date)	26 SJE Kindergarten Orientation Begins SJE Pre-Order Plant Sale through 4/16 MS Spring Sports Begin  HSE Class of 2013 Photos	27 <i>Board of Education Meeting - 8 PM @NYA</i> GH MVTP Breakfast 7:50 am TE Chorus Concert @ 7:00 pm	28 AMS Principal's Coffee 8 am	29	30 DE Pre K Program MPE Poem in Your Pocket Assembly NYSSMA All-Sate Auditions (Port Jefferson)  ➤	31 NYSSMA All-Sate Auditions (Port Jefferson)

March 2012

S	M	T	W	T	F	S
4	5	6	7	8	9	10
11	12	13	14	15	16	17
18	19	20	21	22	23	24
25	26	27	28	29	30	31

May 2012

S	M	T	W	T	F	S
6	7	8	9	10	11	12
13	14	15	16	17	18	19
20	21	22	23	24	25	26
27	28	29	30	31		

# April 2012

Sun	Mon	Tue	Wed	Thu	Fri	Sat
1	2 ESL World Cultures Celebration 6-8pm @ HSW SEPTA Mtg. 7 pm	3 BB PTA Mtg. AE, DE, NE, SJE PTA Mtg. 7 pm SE, TE PTA Mtg. 7:30 pm AE Pre-K Registration Civil Rights Day @ HSW	4 NE Spring Photos AE Spring Photos AMS PTA Mtg. GH PTA Mtg. 8 pm GH Reflections Showcase 7 pm Civil Rights Day @ HSE	5 Arts-In-Ed Mtg. @ NYA 10 am	6 <b>GOOD FRIDAY</b>	7 <b>FIRST DAY OF PASSOVER</b>
8 <b>EASTER SUNDAY</b>	9	10 <i>Board of Education Meeting - 8 PM @NYA</i>	11 <b>EASTER/PASSOVER</b>	12	13 <b>CONCLUSION OF PASSOVER</b> (begins sunset 4/12) →	14
15 <b>ORTHODOX EASTER</b>	16 DE Pre K Program College Scholarship Mtg. - NYA	17 MPE PTA Mtg. 7pm MTP PTA Mtg.	18 HSE Holocaust Remembrance Day NE Blood Drive 4-8:30 pm NMS PTA Mtg. 10 am NYSSMA Solo & Ensemble Satellite-HSW	19 AE PTA Volunteer Breakfast 10 am SE Curriculum Fair MPE Grade K Sports Night 7 pm HSW Jazz Festival HSE, HSW PTSA Mtg. NYSSMA Solo & Ensemble Satellite-HSW Supt. PTA Mtg. 10 am	20 DE PTA K Sports Night 7 pm MPE Clothing Drive GH Earth Day Celebrations NYSSMA Jazz/Guitar/Drum Set (West Islip) END OF THIRD QUARTER	21 HSE Junior Prom NYSSMA Jazz/Guitar/Drum Set (West Islip)
22	23 MPE Reflections Breakfast 8:30 am TE Book Fair through 4/27 PTA Council Mtg. - 8 pm	24 <i>Board of Education Meeting - 8 PM @NYA</i>  MPE Vocal Music Concert 7 pm TE Kindergarten Orientation GH CML Awards	25 NE Kindergarten Orientation 10:30-12:30 pm AMS, GH, NMS NJHS Induction 7:30 pm NMS All Star Ceremony Pd. 1 HSW Jazz Festival HSW Holocaust Remembrance Day	26 SE Donuts with Dad Grade 3 HSE Musical Production	27 AMS Grade 6 Dance 7-9 pm HSE Musical Production	28 TE Family Walk/Run Event AMS Pride Day HSE Musical Production
29	30 NMS Spring Concert 7:30 pm HSW National English Honor Society Induction - 6:30 pm					

April 2012

S	M	T	W	T	F	S
1	2	3	4	5	6	7
8	9	10	11	12	13	14
15	16	17	18	19	20	21
22	23	24	25	26	27	28
29	30					

June 2012

S	M	T	W	T	F	S
3	4	5	6	7	8	9
10	11	12	13	14	15	16
17	18	19	20	21	22	23
24	25	26	27	28	29	30

# May 2012

Sun	Mon	Tue	Wed	Thu	Fri	Sat
		<p>1</p> <p>AE, BB PTA Mtg. NE PTA Mtg. 10 am MPE, SJE PTA Mtg. 7 pm MPE, SJE Staff Appreciation Day MTP Kindergarten Orientation SE, TE PTA Mtg. 7:30 pm TE PTA Blood Drive</p>	<p>2</p> <p>BB Blood Drive DE PTA Staff Appreciation Day NE Staff Appreciation Day AMS Gr. 5 Parent Orientation 7:30 p m GH Spring Concert NMS Spring Concert</p>	<p>3</p> <p>AMS Staff Appreciation Day Arts-In-Ed Mtg. @ NYA 10 am HSE National English Honor Society Induction - 6:30 pm 6th Gr. Athletic Orientation @ NMS 7 pm HSW Staff Appreciation Day HSW Safe Driving</p>	<p>4</p> <p>AE Beautification AMS Grade 7 Dance 7-9 pm GH Read Aloud HSW Tournament of Plays</p>	<p>5</p> <p>SAT @ HSW</p>
6	<p>7</p> <p>SJE Plant Sale through 5/11 Pre-Order Plant Sale Pickup AMS Concert GH Spring Concert SEPTA Mtg. 10 am College Scholarship Mtg. - NYA AP Testing</p>	<p>8 <b>Board of Education Meeting - 8 PM @NYA</b></p> <p>DE PTA Mtg. 10 am MTP PTA Mtg. MPE Interdisciplinary Fair SE Staff Appreciation Day</p>	<p>9</p> <p>AE Staff Appreciation AE Spring Flower Sale AMS PTA Mtg. GH PTA Mtg. NMS Spring Concert</p>	<p>10</p> <p>AE Children's Flower Sale DE PTA Plant Sale MPE Plant Sale Business Etiquette/Honor Society Induction - 6-9 pm HSE PTSA Mtg.</p>	<p>11</p> <p>AE Beautification Day MPE, SE Plant Sale SE Mother's Day Tea Grade K TE Plant Sale HSE Staff Appreciation Day</p> <p style="text-align: right;">➤</p>	<p>12</p> <p>Booster Club Hall of Fame</p>
13	<p>14</p> <p>AMS Concert GH Spring Book Fair through 5/21 GH Spring Concert</p> <p>AP Testing</p>	<p>15 <b>Budget Vote &amp; BOE Elections</b></p> <p>AE Book Fair SJE Blood Drive GH Staff Appreciation Day</p>	<p>16</p> <p>AMS Concert GH Spring Concert NMS PTA Mtg. 7:30 pm</p>	<p>17</p> <p>NE Field Day HSW PTSA Mtg. SE Gr.5 Band/Orchestra Concert 7:30 pm MTP Kindergarten Screening AMS Students of Distinction Breakfast Technology Honor Society Induction @ HSE - 6 pm HSE, HSW Spring Concert I Supt. PTA Mtg. 10 am HSE/HSW Rotary Awards @ HSE ASCENSION DAY</p>	<p>18</p> <p>MTP Kindergarten Screening NMS Spl. Ed. Gr. 5 Parent Orientation - 8 am HSE Ease Into East</p>	<p>19</p>
20	<p>21</p> <p>AMS Concert DE Grade K Field Day MTP Kindergarten Screening GH Spring Concert NMS Spring Concert School of Business Awards Ceremony @ HSW Auditorium - 6 pm PTA Council Mtg. - 8 pm</p>	<p>22 <b>Board of Education Meeting - 8 PM @NYA</b></p> <p>MTP Kindergarten Screening GH Grade 5 Student Visit HSE, HSW Spring Concert II HSE &amp; HSW Gold Cord Awards</p>	<p>23</p> <p>DE Grade 1-5 Field Day MPE PTA Sponsored Walk for Education MTP Kindergarten Screening AMS, GH, NMS Concert History Conference @ HSW HSW Junior Prom</p>	<p>24</p> <p><b>Superintendent's Conference Day STAFF ONLY</b></p>	<p>25</p> <p><b>Superintendent's Conference Day STAFF ONLY</b></p>	<p>26</p>
<p>27</p> <p>SHAVUOT (begins sunset 5/26)</p>	<p>28</p> <p><b>MEMORIAL DAY</b></p> <p>SHAVUOT</p>	<p>29</p> <p>AE PTA Mtg. DE K Field Day Rain Date MPE Spring Concert HSW Math Honor Inductions</p>	<p>30</p> <p>DE Grades 1-5 Field Day Rain Date AMS Academic Awards 7:30 pm GH Grade 5 Parent Orientation 7 pm NMS Grade 5 Parent Orientation 7:30 pm NYSSMA Major Performing Group Assessments @ NMS HSE Math HS Induction</p>	<p>31</p> <p>MPE Grade 5 Trip SJE Field Day TE Field Day HSE, HSW Spring Concert III IAB Mtg. @ HSW 3-5 pm</p>		

May 2012

S	M	T	W	T	F	S
6	7	8	9	10	11	12
13	14	15	16	17	18	19
20	21	22	23	24	25	26
27	28	29	30	31		

July 2012

S	M	T	W	T	F	S
1	2	3	4	5	6	7
8	9	10	11	12	13	14
15	16	17	18	19	20	21
22	23	24	25	26	27	28
29	30	31				

# June 2012

Sun	Mon	Tue	Wed	Thu	Fri	Sat
					<p>1</p> <p>AE Incoming K Orientation MTP Field Day NE Year End Event 7-9 pm SJE, TE Field Day Rain Date SE Field Day AM/K-2 PM/3-5 GH Renaissance Assemblies Science Awards Night 6 pm</p>	<p>2</p> <p>HSE Senior Prom</p>
<p>3</p>	<p>4</p> <p>AMS Concert GH Spring Concert NMS Concert HSE Senior Connections Concert College Scholarship Mtg. - NYA Spring Athletics Awards Night 7 pm SEPTA Mtg. 7 pm</p>	<p>5</p> <p>AE PTA Dinner BB, MTP, NE, SE, TE PTA Mtg. DE Grade 5 Spring Concert 7 pm MPE Field Day SJE Spring Concert HSE Concert HSW Concert GH Star Student Breakfast 7:50 am HSE Class of 2013 Photo Retakes</p>	<p>6</p> <p>DE Grade 5 Event AMS Students of Achievement Breakfast SJE PTA Transition Tea 11 am AMS, GH PTA Mtg. NMS Academic Awards 7:30 pm NMS All Star Ceremony Pd. 1 HS Seniors Music Awards Night @ HSW HSE Class of 2013 Photo Retakes</p>	<p>7</p> <p>MPE Field Day (Rain Date) MTP Field Day (Rain Date) TE Picnic HSE, HSW Senior Awards @ HSW AMS Friendship Games Arts-In-Ed Mtg. @ NYA 10 am</p>	<p>8</p> <p>TE Picnic (Rain Date) NE Play AMS Grade 8 Dance 7:30 - 10 pm GH Grade 8 Dance 7-10 pm NMS Grade 8 Dance 7-10 pm HSE, HSW Last Day of Classes</p>	<p>9</p> <p>DE 50th Anniversary Event</p>
<p>10</p>	<p>11</p> <p>DE Volunteer Recognition Night 7 pm SE Spring Concert @ HSW 7:30 pm AMS Friendship Games (Rain Date) GH Grade 6 Academic Awards 7 pm</p>	<p>12 <b>Board of Education Meeting - 8 PM @NYA</b></p> <p>AE Concert @ HSW BB Spring Concert NE Grade 5 Concert 7 pm MPE PTA Mtg. 10 am MTP Spring Concert</p>	<p>13</p> <p>GH Grade 8 Academic Awards 7 pm GH Grade 7 Academic Awards 8 pm</p> <p>REGENTS _____</p>	<p>14</p> <p>MTP Gr. 5 Pizza Party SE Flag Day Supt. PTA Mtg. 10 am HSW PTSA Mtg. Tenth Grade Night @ HSE 7 pm Senior Athletic Awards Night HSW 7pm</p>	<p>15</p> <p>MPE Grade 5 Event MTP Awards</p>	<p>16</p> <p>DE 50th Anniversary Event (Rain Date)</p>
<p>17</p>	<p>18</p> <p>PTA Council Mtg. - 8 pm College Scholarship Reception @ HSW</p> <p>REGENTS _____</p>	<p>19</p> <p>SJE Moving Up Ceremony 10 am</p>	<p>20 <b>1/2 day Elementary</b></p> <p>AE, BB, MTP, NE, TE Moving Up Day DE Moving Up Ceremony 10:15 am MPE Moving Up Ceremony 10:15 am SE Moving Up Day 9:15 am HSW Senior Prom</p>	<p>21 <b>1/2 day Elementary</b></p> <p>AMS Moving Up Day 8A - 9 am 8B - 11:15 am GH Moving Up Day 9:30 am NMS Moving Up Ceremony -Team 8A 8:30 am - Team 8B 11:00 am HSE, HSW Graduation 5 pm END OF FOURTH QUARTER</p>	<p>22 <b>Superintendent's Conference Day</b></p> <p>HSE, HSW Graduation (Rain Date)</p>	<p>23</p>
<p>24</p>	<p>25</p>	<p>26 <b>Board of Education Meeting - 8 PM @NYA</b></p>	<p>27</p>	<p>28</p>	<p>29</p>	<p>30</p>

June 2012

S	M	T	W	T	F	S
3	4	5	6	7	8	9
10	11	12	13	14	15	16
17	18	19	20	21	22	23
24	25	26	27	28	29	30

# July 2012

August 2012

S	M	T	W	T	F	S
5	6	7	8	9	10	11
12	13	14	15	16	17	18
19	20	21	22	23	24	25
26	27	28	29	30	31	

Sun	Mon	Tue	Wed	Thu	Fri	Sat
1	2	3	4 <b>Independence Day</b>	5	6	7
8	9	10	11	12	13	14
15	16	17	18	19	20	21
22	23	24	25	26	27	28
29	30	31				

July 2012

S	M	T	W	T	F	S
1	2	3	4	5	6	7
8	9	10	11	12	13	14
15	16	17	18	19	20	21
22	23	24	25	26	27	28
29	30	31				

# August 2012

September 2012

S	M	T	W	T	F	S
2	3	4	5	6	7	8
9	10	11	12	13	14	15
16	17	18	19	20	21	22
23	24	25	26	27	28	29
30						

Sun	Mon	Tue	Wed	Thu	Fri	Sat
			1	2	3	4
5	6	7	8	9	10	11
12	13	14	15	16	17	18
19	20	21	22	23	24	25
26	27	28	29	30	31	